

Housing and Conservation Planning Program (HCPP) Town of Marlow, NH - Development Constraints

- Towns Boundaries
- Tax Parcel Boundaries
- Zoning**
- Residential District -10
- Residential District-2
- Residential District-5
- Rural Lands District
- Village District
- Roads**
- Class I and II
- Class III, IV, and V
- Class VI
- Class VII
- Conservation Land
- Public Open Space or Recreation (unprotected)
- Hydric Soils*
- Shallow to Water Table (less than 36")*
- Steep Slopes**
- 15-25%
- Greater than 25%
- Flood Zone
- Lakes, and Ponds
- Wetlands
- Rivers and Streams
- Intermittent Streams

1:15,000
0 0.25 Miles

0.25 0.25 Miles

SWRPC
24 Canal Square, 2nd Floor
Keene, NH 03431
(603) 357-4357
fax: (603) 357-7446
http://www.swrpc.org
email: admin@swrpc.org

Digital base information provided by the
New Hampshire Geographically Referenced
Analysis and Information Transfer System (GNATS)

MAP NOT INTENDED FOR SITE SPECIFIC WORK

NOVEMBER 2009
*USDA Soil Survey of Cheshire County Y:\Projects\2009\HCPP\Marlow_BaseMap_2009.mxd

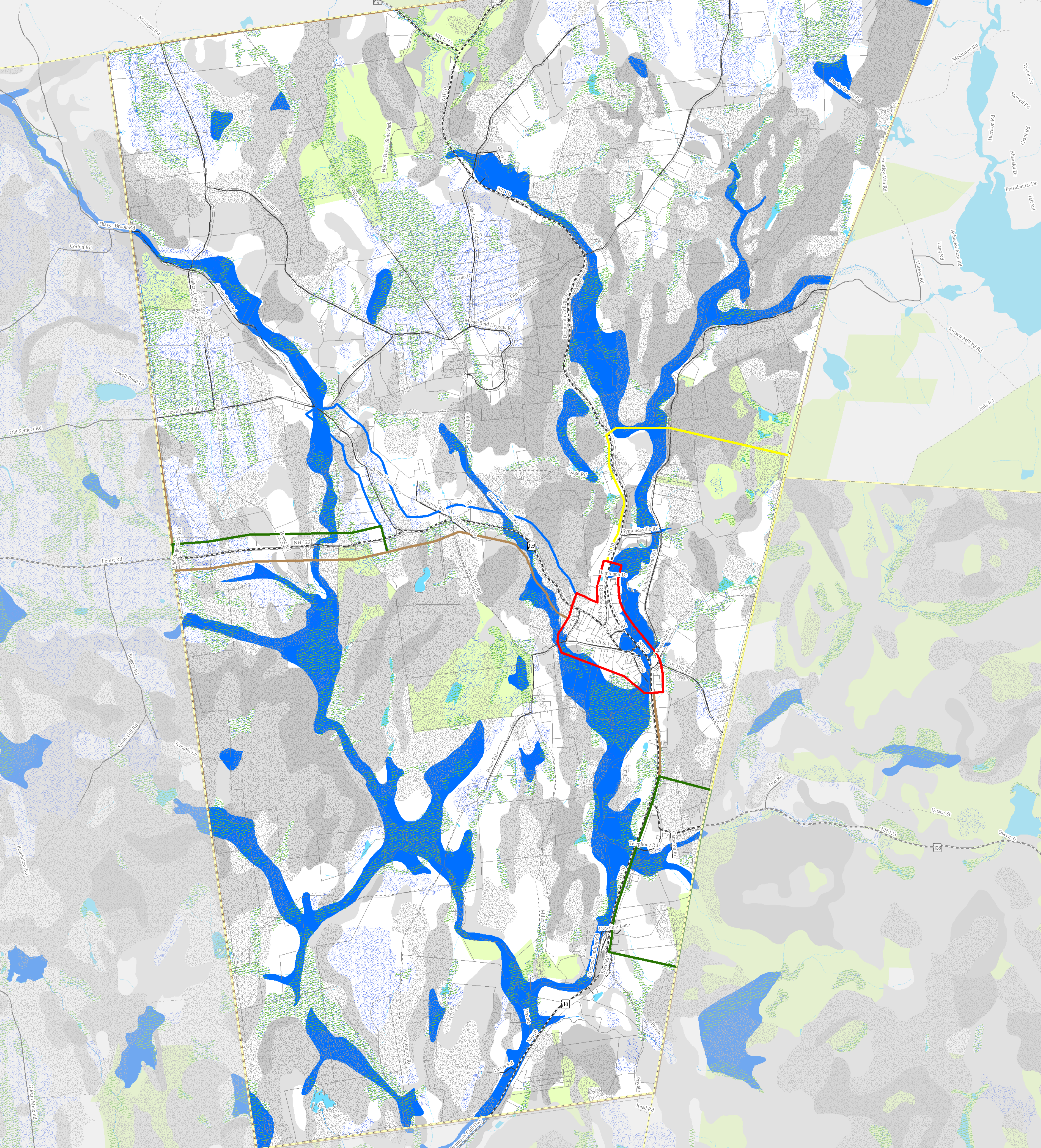


Figure 18. Development constraints in Marlow, NH. These constraints include conservation lands, public open space and recreation, hydric soils, areas shallow to the water table, floodplains, lakes, ponds, and wetlands, and steep slopes. Southwest Region Planning Commission