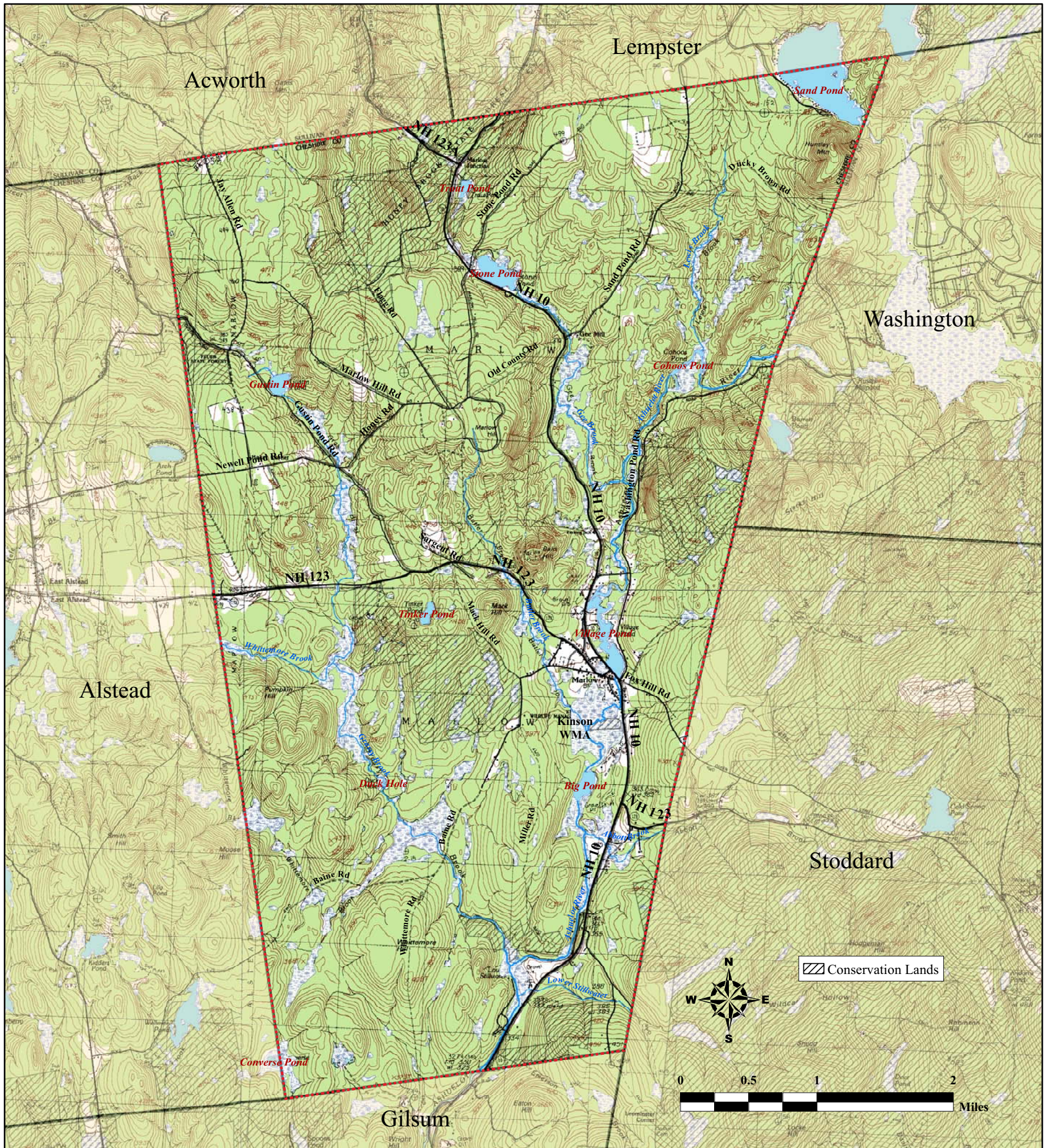


# Marlow Natural Resources Inventory Topological Map [2002]



Jeffrey N. Littleton, M.S.  
Conservation Ecologist  
(603) 363-8489  
Moosewood Ecological LLC  
Innovative Conservation Solutions for New England

Map is to be used for planning purposes only. Accuracy of data to be verified by end user. Use of this map constitutes agreement with terms of the Moosewood Ecological GIS Data Disclaimer. This map was created using ArcView 9.3.1 from ESRI with data supplied by NH GRANIT.

Latest Map Revision: November 2, 2009

**Figure 6.** U.S. Geological Survey topological map (2002) of Marlow, NH. This map demonstrates the general topography and distribution of transportation systems, general developed areas, conserved lands, ponds, lakes, rivers, streams and larger wetland systems. Moosewood Ecological LLC