

Jacqui Fay

From: Cheshire County Conservation District <benee+cheshireconservation.org@ccsend.com>
Sent: Thursday, February 17, 2022 11:46 AM
To: Jacqui Fay
Subject: Match Alert: Support Solar for Farms! Double Your Impact Today!



Match Alert: Support Solar for Farms! Double Your Impact Today!

New Hampshire farmers face significant energy expenses. The Monadnock Region Community Supported Solar Project (CSS), **supports local farmers and ensures a bright future for our community!**

Through the generous donation of Peggy Ueda, all donations to our crowdfunding campaign will be matched up to \$1,000!

All proceeds will go directly to making solar more accessible to local farmers!

Your donation today, increases the viability of local farms, advances the sustainability of our region, and in turn, strengthens our local food system!

Donations of any amount are greatly appreciated:

<https://monadnock.thelocalcrowd.coop/campaign/community-supported-solar-for-farms/>

Prefer to donate through the mail? Checks can be made payable to "Cheshire County Conservation District" and addressed to 11 Industrial Park Dr., Walpole, NH 03608.

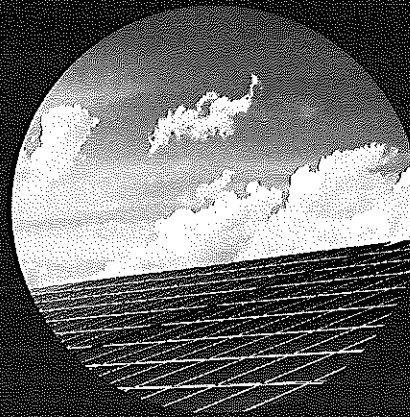
Farmers are the heart of our region: providing fresh produce, caring for the land, and nourishing our community. With farmers being key to our local food system and conservation priorities, it is crucial that they too are supported!

Match Alert!

All donations will be matched up to \$1,000! Double your impact!

**Donate
Now!**

Thank you to our generous match donor
Peggy Ueda!



**[cheshireconservation.org/
solar](http://cheshireconservation.org/solar)**

There are so many ways to support this important initiative! Forward this email to colleagues, friends, and family, and like and share our crowdfunding posts on CCCD's [Facebook](#) and [Instagram](#)!

Help us spread the word and strengthen our impact!

Learn more about CSS, [here](#)!

Thank you for helping us support those who grow the food on our plate!

**For further information please contact Cheshire County
Conservation District:
603-756-2988 x4 / info@cheshireconservation.org**



Cheshire County Conservation District | 11 Industrial Park Drive, Walpole, NH 03608

[Unsubscribe marlowtownoffice@marlownh.gov](mailto:marlowtownoffice@marlownh.gov)

[Update Profile](#) | [About Constant Contact](#)

Sent by benee@cheshireconservation.org in collaboration with



