

Notice Board

Jacqui Fay

From: Cheshire County Conservation District <benee+cheshireconservation.org@ccsend.com>
Sent: Wednesday, November 17, 2021 9:56 AM
To: Jacqui Fay
Subject: This Giving Season, Support CCCD's Community Conservation Efforts!



**This Giving Season, CCCD Thanks our
Incredible Community!**

At the heart of Cheshire County Conservation District (CCCD)'s work is our community. We are fortunate to continue to serve our dedicated community of county farmers, foresters, and landowners. For the past 76 years, we have been able to serve this special community thanks to your support and commitment to the conservation of our natural and agricultural resources.

This giving season, CCCD asks you for your support.

This year, we have seen the impact of these challenging times on our community. We have continued to support our

community farmers, foresters, and community members through our annual programs.

Support CCCD's Conservation Efforts

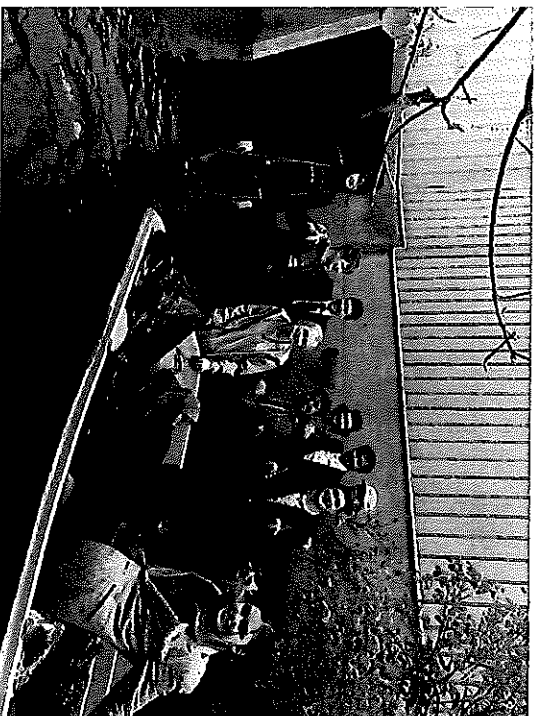


“I am immensely grateful for the Cheshire County Conservation District’s Veteran Appreciation Month. It gives all of us the opportunity to purchase healthy food and to support local agriculture. As a regular customer of the area markets, I can also tell you that the vouchers offered during Veteran Appreciation Month inspire many people to support local agriculture who otherwise might not come out.”

-Cheshire County Resident and Air Force Veteran

Through these difficult times, our commitment to the community is stronger than ever. We continue to work hard fulfilling our vision of encouraging stewardship for healthy soils, productive and ecologically sound farms, diverse wildlife, sustainable forests, healthy watersheds, and clean water to ensure these resources are available for future generations.

CCCCD relies on your generous support to continue our conservation efforts in Cheshire County. A donation to CCCC is an investment in our community's future! Every dollar goes to funding our efforts and helps to improve this community that we call home.



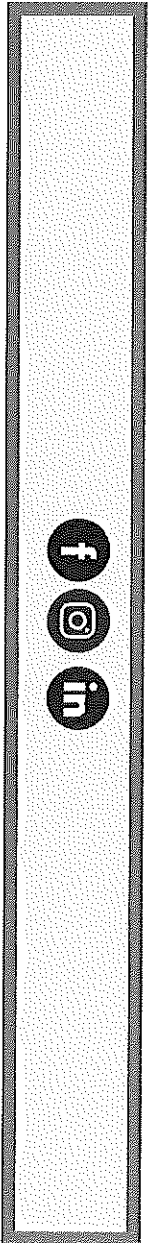
"This has been such an incredible experience for both of us. Knowing that we had help if needed was the impetus to get this garden going. Everyone we worked with was kind, knowledgeable and willing to help. I would not hesitate to recommend this grant program to anyone. We learned about native plants, birds, insects, bees, butterflies, moths, and bugs... We're planning additions to our garden for next year; a pollinator hotel and possible plants. I'm already excited to see what next year brings."

-Cheshire County Residents and Conservation Opportunity Fund Recipients

We appreciate your interest and support.
Contributions of any amount make a difference and
are greatly appreciated!

Support CCCD's Conservation Efforts

Prefer to donate through the mail? Checks can be made payable to "Cheshire County Conservation District" and addressed to 11 Industrial Park Dr., Walpole, NH 03608.



Cheshire County Conservation District | 11 Industrial Park Drive, Walpole, NH 03608

unsubscribe_marlowtownoffice@marlownh.gov

[Update Profile](#) | [About Constant Contact](#)

Sent by benee@cheshireconservation.org in collaboration with



Try email marketing for free today!