

Jacqui Fay

**From:** Cheshire County Conservation District <benee@cheshireconservation.org>  
**Sent:** Friday, April 5, 2024 9:33 AM  
**To:** Jacqui Fay  
**Subject:** April Conservation Newsletter

# Conservation News April 2024

## News & Updates

- CCCD Celebrates Earth Day!
- CCCD Is Hiring!
- April Blog Article
- Congratulations Conservation Opportunity Fund Recipients!
- No-Till Seed Drill for Sale!

## CCCD Events & Grant Opportunities

- 2024 Local Work Group
- Equipment Field Day
- BCS Tractor Training
- Birding on the Farm
- Pollinator Palooza: Save the Date!
- NH Farm Future Fund
- Energy Stipend Grants for Specialty Crop Producers

## Workshop Opportunities, Events & Community Programs!



CHESHIRE COUNTY  
CONSERVATION DISTRICT



## April Blog Article *Starting from the Ground Up: A Closer Look at CCCD's Equipment Rental Program*

**By: Benée Hershon**

The equipment rental program began in the 2011 season with the acquisition of the 7' No Till Seeder,

See what local conservation events are happening in the upcoming months and review important community event & workshop opportunities!

## Resources & Services

Discover local resources like the [Outdoor Recreation Map](#), [Seed and Tool Lending Library](#), [Farm Equipment Rental Program](#), [Gear Library](#), and [Find A Local Farm Map](#) always available to you through the Cheshire County Conservation District.

**Connect with us [on social media](#)** for up to date events, articles, and information!

which was made possible by the State Conservation Committee Grant. Since 2011, the Cheshire County Conservation District has provided low-cost farm equipment rentals each year throughout our region and beyond.

This program is a valuable cost-saving service to local growers and supports CCCD's mission of improving soil quality and management through the conservation and responsible use of natural and agricultural resources.

From humble beginnings, CCCD's program today offers 12 pieces of equipment to accommodate the diverse needs and conservation goals of producers.

The program has been a success with a total of 334 rental since 2016 and usage on over 4,000 acres since 2019!

Read below to learn more!

[Click here to read "Starting from the Ground Up: A Closer Look at CCCD's Equipment Rental Program"](#)

**CCCD Celebrates Earth Day!**



CCCD celebrates Earth Day! We feel lucky to have the opportunity to work with our amazing community to benefit our planet's future through the conservation of soil, water, wildlife, and farm viability!

In the face of climate change, CCCD is committed to our mission now more than ever. We are already beginning to see the impacts of climate change in Cheshire County and beyond. The United Nations' latest Intergovernmental Panel on Climate Change (IPCC) report highlights the impacts we will continue to see, such as increased precipitation, drought, extreme weather, and rising temperatures over the next 30 years.

We know that this can be overwhelming, and we find hope in knowing that the programs CCCD supports and offers to our community is an important step to paving a bright future. Our programs focus on a wide range of critical issues: renewable energy, healthy soil practices which promote carbon capture, promoting clean water, and increasing crucial habitat for our pollinators, and more!

The most important part of climate change, is that there is something that we can all do, from big steps to small! Learn more at the link below about different actions that you can take for the future of our planet!

**10 Actions for a Healthy Planet!**

**CCCD is Hiring!**

# Administrative Coordinator



CCCD is excited to expand our team! CCCD is seeking an Administrative Coordinator to provide office administration and support for programs, equipment rentals, outreach, and development in coordination with the District Staff and Board of Supervisors.

Perform a wide range of activities for the Conservation District Board and/or District Manager to facilitate the efficient operation of the organization.

This is a year-round part-time position for 15-20 hours/week. Compensation is \$20/hour. Location is the Walpole NH office with potential for limited remote work, considered on a case-by-case basis. This is a three-year position with opportunity for extension.

[Learn More and Apply Today!](http://cheshireconservation.org/careers)

**April Blog Article:  
Starting From the Ground Up: A Closer Look  
at CCCD's Equipment Rental Program**



The equipment rental program began in the 2011 season with the acquisition of the 7' No Till Seeder, which was made possible by the State Conservation Committee Grant. Since 2011, the Cheshire County Conservation District has provided low-cost farm equipment rentals each year throughout our region and beyond.

This program is a valuable cost-saving service to local growers and supports CCCD's mission of improving soil quality and management through the conservation and responsible use of natural and agricultural resources.

From humble beginnings, CCCD's program today offers 12 pieces of equipment to accommodate the diverse needs and conservation goals of producers.

The program has been a success with a total of 334 rental since 2016 and usage on over 4,000 acres since 2019!

[Read the April Blog Here!](#)

**Congratulations 2024 Conservation  
Opportunity Fund Recipients!**



The Cheshire County Conservation District is excited to announce the 2024 round of Conservation Opportunity Fund recipients: Eileen Casey of Keene, Gemmo Forest of Keene, Keene Parks and Recreation Department and the Edgewood Neighborhood of Keene, Jake Pipp of Keene, Albie Mason and Phylcia Roberts of Keene, Eli Rivera of Keene, Laura Shim of Keene, James Sullivan of Fitzwilliam, and Lynn Zimmerman of Surry.

The Conservation Opportunity Fund's mission is to provide funding for owners of small tracts of land who are interested in improving the wildlife habitat on their property.

Eileen Casey will install a native shrub hedgerow, Gemmo Forest will install early successional habitat, Keene Parks and Recreation Department and Jamie Doherty and Sarah Ellsword on behalf of the Edgewood Neighborhood will install pollinator habitat, Jake Pipp will install pollinator habitat, Albie Mason and Phylcia Roberts will install a rain garden, Eli Rivera will install pollinator habitat and a rain garden, Laura Shim will install pollinator habitat and a rain garden, James Sullivan will install pollinator habitat, and Lynn Zimmerman will install pollinator habitat

If you're interested in applying for funding in 2025, visit the Conservation Opportunity Fund website for examples of past projects, resources, and check back for applications to be posted in Fall 2024: <http://www.cheshireconservation.org/cof>

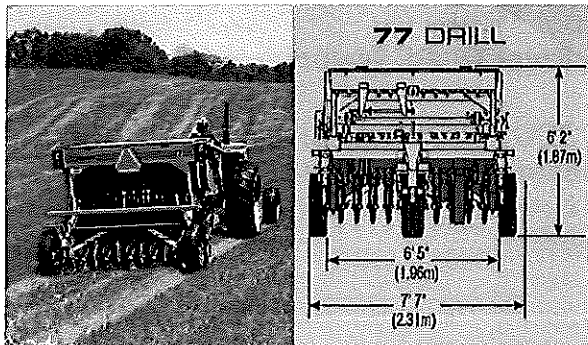
The Conservation Opportunity Fund is a grant program that is made possible by the generous contributions of private donors, and administered by the Cheshire County Conservation District. If you would like to make a donation to support future funding of Conservation Opportunity Fund, please do so on our website: [www.cheshireconservation.org/donate](http://www.cheshireconservation.org/donate).

Donations to the fund may also be made by mail, checks can be made payable to "CCCD" and addressed to 11 Industrial Park Dr., Walpole, NH 03608. Please include "COF" in the memo line. Contributions of any amount are greatly appreciated and make a difference!

For further information, or to be added to a conservation opportunity fund email list contact: (802) 518-0993 or email [info@cheshireconservation.org](mailto:info@cheshireconservation.org)

[Learn More About the Conservation Opportunity Fund Here!](#)

## No-Till Seed Drill for Sale: \$15,000 or Best Offer!



The Cheshire County Conservation District (CCCD) is selling our **farm equipment rental program's** no-till seed drill!

**Model:** Haybuster 77 All Purpose Drill

**Size:** width 7'7", length 15'11", weight 3,360lbs, serial number: JJ-7447

**Requirements:** No less than 40HP Tractor with Hydraulics, Towing– straight drawbar pin

Cheshire County Conservation District purchased new in 2011. Acreage meter reads 2,325. Maintained regularly by Steve's Equipment in Westmoreland NH.

Haybuster 77C Seed Drill with accurate depth control through packer wheels and parallel linkage, three seed boxes with individual metering, depth control adjustment, infinite rate adjustments, pressure control springs for up to 300 lbs of down pressure, easy pull type transportation, and more! Ideal for everything from warm and cool season grasses to small grains and soybeans.

To ask questions or make an offer please contact Amanda Littleton at 401-578-1608 or [amanda@cheshireconservation.org](mailto:amanda@cheshireconservation.org)

Drill is located in Westmoreland NH, buyer is responsible for pick-up.

[View More Photos and Specifications Here!](#)

## CCCD Events and Opportunities



### 2024 Equipment Field Day

**When: April 9, 11:00AM-1:00PM  
(Snow Date: April 11th)**

**Where: Cheshire County Farm, River Road, Walpole, NH**

Join Cheshire County Conservation District (CCCD), UNH Extension staff, NRCS staff and farmers to see equipment in action and learn about CCCD's **equipment rental program!** Learn how other farmers have utilized equipment on their land and ask questions!

USDA is an equal opportunity employer, provider and lender. This project was made possible by the NH State Conservation Committee Conservation Moose Plate Grant Program.

[Register Here!](#)



### 2024 Local Work Group Meeting: New Date Announced

**When: April 10 (Snow Date April 17th), 4:30PM-6:00PM**



**Where: Walpole Town Hall, Walpole, NH**

Offer Your Feedback to the Sullivan and Cheshire Conservation Districts on how NRCS can better serve your needs and the needs of your community. Local work group meetings are a yearly opportunity to make your voice known when it comes to protecting natural resources and promoting the products that come from them. Feedback you provide at this meeting and through our survey will help determine local NRCS funding decisions!

**Register Here!**



**BCS Tractor Training**

**When: April 17, 4:00PM-7:00PM**

**Where: Antioch's CGC Site at the County Farm, River Road, Walpole, NH**

Join us for a 3 hour BCS Tractor Training, a required training to rent the BCS tractor through CCCD's Equipment Program in 2024!

Cheshire County Conservation District (CCCD), in partnership with UNH Cooperative Extension, the National Center for Appropriate Technology (NCAT) Northeast, and Antioch University New England's Community Garden Connections (CGC) will host one 3-hour BCS Tractor trainings. To be eligible to rent the BCS Tractor through CCCD's equipment program in 2024, you must attend this training.

**Register Here!**

---



## **Birding on the Farm**

**When: May 10, 7:30AM**

**Where: Scott Farm Orchard, 707 Kipling Rd, Dummerston, VT**

Join us for an exciting opportunity to bird on farms throughout our region! Learn new skills and about wildlife conservation on the farm!

Participants will learn about farm habitat dynamics for birds, habitat management, wildlife conservation on the farm, as well as species identification from experienced bird guides.

- This workshop series is open to birders and enthusiasts of all skill levels!
- Participants should bring binoculars with them (extras may be available), and weather appropriate dress and boots.
- Walking will include slow-paced off-path walks over relatively flat terrain with stops for discussion and observation!

Presented by **Cheshire County Conservation District (CCCD), USDA Natural Resources Conservation Service (NRCS), Windham County Natural Resources Conservation District (Windham NRCD), Southeastern Vermont Audubon, and the Antioch Bird Club!**

[\*\*Register Here!\*\*](#)



## **2024 Pollinator Palooza: Save the Date!**

**When: Tuesday, June 25th, 11:00AM-2:00pm**

**Where: Ashuelot River Park, Keene, NH**

CCCD invites you to the 2024 Pollinator Palooza!

Join us for an afternoon of learning and celebration of pollinators following National Pollinator Week! Learn more from organizations throughout our region, and enjoy games and activities for participants of all ages!

Activities include: a pollinator scavenger hunt, painting your own pot for a native plant, and more!

This event is free and open to the public and will be held rain or shine!

We are also excited to offer the opportunity to shop locally and support conservation! Local plant vendors will be selling a variety of products, with 20% of sales supporting CCCD's conservation programs! More information and registration to be announced soon!

---

For questions or assistance in event registration:  
[benee@cheshireconservation.org](mailto:benee@cheshireconservation.org) or (802) 518-0993

## CCCD Grant Program Opportunities

### 2024 NH Farm Future Fund

The New Hampshire Conservation Districts are thrilled to announce the fifth year and 2024 grant round of the NH Farm Future Fund and are inviting NH land trusts to apply.

The mission of the NH Farm Future Fund is to provide funding for farm viability planning in concert with the conservation of important agricultural soils.

All applicants must contact Amanda

Littleton [amanda@cheshireconservation.org](mailto:amanda@cheshireconservation.org) to schedule a Discovery Meeting if you plan to move forward with a submission.

Funding available to NH Land Trusts for:



### NH Farm Future Fund

NHFFF provides funding for farm viability planning in concert with the conservation of important agricultural soils.

Funding is available for NH Land Trusts with farmland conservation projects. NHFFF funds:

- Financial assistance to offset costs associated with farmland conservation projects
- Technical assistance to support farm business viability and succession planning

Schedule your discovery meeting no later than March 31st!

**Applications Due  
May 31, 2024**



[cheshireconservation.org/NHFFF](http://cheshireconservation.org/NHFFF)

- Financial assistance to offset costs associated with farmland conservation projects
- Technical assistance to support farm business viability and succession planning

**Applications are Due May 31, 2023!**

**Learn More and Apply Here!**

## Energy Stipend Grants for Specialty Crop Producers

Agricultural production consumes significant amounts of energy. After cotton and rice production, specialty crop production had the next highest average electricity expense (\$11,814) among crop producers, due to the use of irrigated water and greenhouse heating. NH ranks sixth in the nation for average electricity costs (US Energy Information Administration).

Through the USDA Specialty Crop Block Grant Program, the Cheshire County Conservation District (CCCD), is excited to offer stipends of \$2,000 to farms to increase their energy efficiency and renewable energy options, with the goal of lowering operating costs, increasing viability, and increasing competitiveness.

Eligible applicants must be specialty crop producers in Cheshire County.

Specialty crops are defined in law as, "fruits and vegetables, tree nuts, dried fruits and horticulture and nursery crops, including floriculture". Read the full definition [here](#).

Eligible projects include but are not limited to: making energy efficiency improvements to farm infrastructure (e.g. coolers, lights, irrigation, electric tractors, etc), due diligence and paperwork needed in purchasing solar shares in net metering opportunities (e.g. Community Supported Solar for Farms in the Monadnock Region), and investing in appropriately scaled on-farm renewable energy projects (e.g. solar). New equipment purchases must be energy star rated to receive funding through the program.

Stipends can be used to fund project costs, consulting with advisors, communicating with vendors and contractors, and farmer time.




Through the USDA Specialty Crop Block Grant Program, the CCCD, is excited to offer stipends of \$2,000 to Cheshire County farms to increase their energy efficiency and renewable energy options, with the goal to lower operating costs, increase viability, and competitiveness.

**CCCD ENERGY STIPEND GRANTS FOR SPECIALTY CROP PRODUCERS**

Applications are due May 10th, 2024!

Apply Today!  
[cheshireconservation.org/energy](http://cheshireconservation.org/energy)



Stipends can NOT be used for construction-related costs or general purpose equipment (equipment not directly related to the energy efficiency/renewable energy goals).

**Applications are due May 10, 2024**

**Learn More and Apply Here!**

## April Wildlife



The Northern Dusky Salamander (*Desmognathus fuscus*) is found through New Hampshire, with the exception of streams near the seacoast of the state.

The salamander is small, typically 2.5-4.5 inches long and is dark gray or brown with a darker molting across the back. Dots that resemble salt and pepper can be found along the sides of the salamander's body. The salamander's hind legs are noticeably stouter than its front legs.

The Northern Dusky Salamander is commonly confused with the Two-lined Salamander.

The salamander can commonly be found along woodland streams under logs, rocks, moss, and wet leaves. They can also be found in brooks, near springs, and in seepages.

During the spring, eggs are laid within a few feet of stream under logs, bark, or moss. Female salamanders guard the eggs until they hatch. In the winter months, they hibernate under logs and rocks in deeper water.

The greatest threats to the Northern Dusky Salamander are habitat loss due to development, climate change, and water pollution.

**Sources:**  
**NH Fish and Game**

**Image Credit:**  
**USGS**

**Get social with CCCD! Stay updated on all the latest news, events, and grant opportunities!**



# Community Events and Information



## American Farmland Trust No-Cost Soil Sampling Program for Farms

To build American Farmland Trust (AFT)'s understanding of the impacts farmland conservation and conservation planning have on soil health in New England we are expanding soil health testing access across the region! Over the next 2 years, our goal is to reach 200 farmers and collect soil samples on 600 fields!

Soil health data and survey results will contribute to an anonymized regional dataset that will be used to expand our understanding of soil health on farms and the barriers that farmers face. Results will be shared with participating farmers and technical advisors, with the broader community through meetings in each state and participation in farmer conferences, and through peer-reviewed publications.

This program includes No-cost Cornell Assessment of Soil Health (CASH) analysis on up to three fields per farmer. Farmers of all types and sizes located in CT, VT, NH, and MA are eligible to participate.

### General information

This service is currently available **only to farmers who have completed the New England Social Dynamics of Soil Health Survey**, which can be taken at: <https://tinyurl.com/NESoilHealthSurvey>. The digital version of the farm history survey can be found here: <https://www.surveymonkey.com/r/BVHZRJZ>

We can offer 3 samples (3 fields/ or management units) per farmer.

**The Spring 2024 sampling period opens April 1st, 2024, and closes on June 1st, 2024, depending on the weather. The Fall 2024 sampling period opens on September 1st, 2024, and closes November 1st, 2024 depending on the weather.**

Farmers that participate in this offer should agree to allow AFT to receive a copy of their results and include those results in a database of soil health indicators for research and benchmarking purposes. We will protect their personal data and results will only be shared in an aggregated, anonymized manner.

**Note:** Results take about 8 weeks to receive, so fall sampling can be used to inform spring fertility and management decisions.

### Materials needed:

5-gallon bucket, spade, ruler/tape, gallon ziplock bags (2 per sample), marker, Cornell Soil Health Lab Sampling Instructions and Submission Form.

**Sample ID:**

The sample ID should be the field zip code, the date sampled, and the sample number separated by hyphens. So, two fields sampled on a farm in North Amherst on June 14<sup>th</sup> would be **01002-061422-01** and **01002- 061422-02**

**Submitting Samples:**

1) Please read and carefully follow the Cornell instructions on collecting, packing, and mailing your samples:

**Sampling Instructions**

**Soil Health Submission Form**

**Packaging and Shipping Protocol**

**Farm History Form**

2) When you have samples ready to send, please email us a copy of your completed submission form (**Kevin Antoszewski**). **NOTE: Samples will be paid for and results returned to the farmer ONLY if you email us the submission form.** Please remember to keep the samples refrigerated until they are mailed.

3) Please pack samples and a print copy of the submission form into the appropriate flat-rate priority box and mail from any post office location. Contact Kevin ([kantoszewski@farmland.org](mailto:kantoszewski@farmland.org)) for a prepaid shipping label and allow one business day for it to be returned.

**Program contact:** for questions and forms: Kevin Antoszewski [kantoszewski@farmland.org](mailto:kantoszewski@farmland.org)



**21-Day Racial Equity Habit Building Challenge**  
April 1-21st  
Online

The FSNE 21-Day Racial Equity Habit Building Challenge is simple! You commit to deepening your understanding of, and willingness to confront, racism for twenty-one consecutive days in April of each year

**[Learn More](#)**

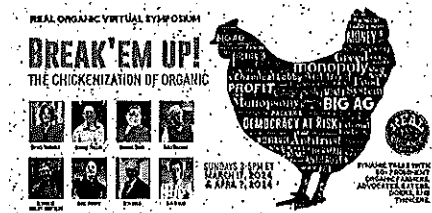


**Easy-Peasy: Growing Peas with Your Child!**  
**You Can Grow Pea Pods with Your Child this Spring**  
April 6th, 1:00-2:30PM  
Keene Public Library, Heberton Hall

Ten Steps from seed to pod! This program is designed for early elementary-age children (grades 3 - 6) and their caregivers. We will supply basic seeds, soil, and know-how and you bring 2 5-gallon plastic containers to plant your seeds and watch them grow.

**[Learn More](#)**





**Real Organic Project's 2024 Virtual Symposium: In Degense of Biology**  
 April 7th, 3:00-5:00PM  
 Online

**Become a Volunteer Guide: NH Butterfly Monitoring Network**  
 April 10th, 6:30-7:30PM  
 Virtual

Do we need sophisticated tech and chemistry to grow our food today, or should we rely on age-old practices that embrace ecology and human wisdom? The current struggle between these two visions for our future is seen in the EU's Farm To Fork proposal and the USDA's submission to Big Ag. While the pesticide industry doubles down on false promises of higher yields and food security to nations that embrace their yet unproven Green Revolution, organic farmers point to the longtime success they've found building organic matter in soils and limiting pest and disease pressure by advancing biodiversity. Our USDA may not be interested in organic methods, but the rest of the world is listening and shaping their climate-friendly policies around these poison-free practices. How can we reshape our food system to restore our democracy?

All butterfly enthusiasts are welcome, with or without prior experience!

The NH Butterfly Monitoring Network is led by NH Fish and Game Department and UNH Cooperative Extension with collaboration from partners statewide, including NH Audubon, Tin Mountain Conservation Center, the Harris Center for Conservation Education, and Ausbon Sargent Land Preservation Trust.

[Learn More](#)

[Learn More](#)



**Spring Volunteer Management Series**  
 April 9th-May 7th, Online

A new conservation field season is upon us! Are you thinking about ways to engage volunteers in stewardship work this year? Join Malin Clyde and Charlotte Thompson of Extension's **Nature Grouple** project for a spring **webinar** series focused on working effectively with stewardship volunteers. We'll tackle recruitment, workday best practices and bigger questions about the value and importance of working with volunteers – for your organization and for society. You'll gain tips for getting the most out of posting on the Nature Grouple website, help for hosting a successful

volunteer workday, and practical resources to use in your work – all based on lessons learned from 10 years of the Nature Groupie project at UNH Extension.

All three trainings will take place on zoom from 12:30 – 1:45 pm with plenty of time for questions:

- **Tuesday, April 9 | Working with Stewardship Volunteers: Moving From Free Labor to Relationship Building**
- **Tuesday, April 23 | Workday 101: Hosting Great Experiences for Nature Groupies**
- **Tuesday, May 7 | Maximizing Nature Groupie: Attracting Volunteers to Your Event**



**Climate Resilient Gardens: Gardening for Extreme Weather Conditions**

April 10th, 6:00-7:30PM  
NH Audubon's Massabesic Center  
Auburn, NH

As home and community gardeners, how do we prepare and adapt our practices to make our gardens more climate-resilient? From seasonal temperature shifts and extreme temperature swings to excess moisture or drought, we'll talk about some practical strategies to address these challenges, and what it means to grow a climate-resilient garden that can not only "weather" these changes, but also reduce your environmental footprint.

**Learn More**



**Resilient Food Systems Infrastructure Grant Program**

Application Deadline Extended to April 12th!



**Getting Good Help: Recruiting and Retaining Trail Volunteers**

April 10th, 12:00-1:00PM  
Online

How do you recruit new trail volunteers and keep them engaged? Join Charlotte Thompson and Andy Crowley for a training on how to recruit and retain trail volunteers. With 10+ years of experience coordinating stewardship volunteers, Charlotte and Andy will share their recommendations for how to plan successful volunteer events that will keep volunteers coming back!

**Learn More**



**Ornamental Trees and Shrub Pruning Demonstration in Keene**

April 15th, 5:00-7:00PM  
Ashuelot River Park, Keene, NH

The Resilient Food Systems Infrastructure Program (RFSI) is designed to build resilience in the middle-of-the-supply-chain in the Granite State and strengthen our local and regional food systems through the creation of new revenue streams in the areas of aggregation, processing, manufacturing, storing, transporting, wholesaling, or distribution of local agricultural products.

[Learn More](#)

This free workshop will focus on pruning various ornamental trees and shrubs. No registration or fees are required but small donations are appreciated. Dress or the weather.

For persons with disabilities requiring special accommodations, please contact Steph Sosinski, [stephanie.sosinski@unh.edu](mailto:stephanie.sosinski@unh.edu), (603) 294-4247, prior to the event. Given ample time, we will make any reasonable effort to make accommodations.

[Learn More](#)



**NOFA-NH's "Feeding the Family" Organic Gardening Workshop Series**  
April 16th-May 7th, Online

Are you tending a garden for the first time, or have you been growing food for many years? NOFA-NH's "Feeding the Family" Organic Gardening Workshop Series offers instruction for new and experienced home growers seeking to build skills to feed themselves, their families and develop self-sufficiency. Knowledgeable speakers from across the Northeast share their expertise with informative workshops throughout the spring. Learn about how to improve a home growing system or start something new.

The 2024 gardening series is a mix of four online workshops on Tuesday evenings from 4/16-5/7 and one in person workshop on Saturday, 5/11. Register for the full online series or individual workshops. The in-person workshop must be registered for separately and has a capacity of 25 people.

Topics this year include native perennials for edible landscapes, seed starting, soil microbiology, and techniques for building self-sufficiency.

[Learn More](#)



**Spring Business Lab Pitch Event**  
April 16th, 5:00-7:00PM  
Hannah Grimes Center for Entrepreneurship

The Resilient Food Systems Infrastructure Program (RFSI) is designed to build resilience in the middle-of-the-supply-chain in the Granite State and strengthen our local and regional food systems through the creation of new revenue streams in the areas of aggregation, processing, manufacturing, storing, transporting, wholesaling, or distribution of local agricultural products.

[Learn More](#)

**The Wonders of Water:  
Practical Ideas and Resources for Educators**  
April 16th, 7:00-8:00PM EST  
Online

Water is essential for life and each of us is part of the water cycle each day wherever we live. Join us for this collaborative workshop where we will discuss all things water education, from our place in the cycle, to the other beings we share the water with, how to study it and how we are linked to the oceans!

[Learn More](#)



**Cheshire Walkers Spring 2024 Schedule Announced!**  
April 16th-June 4th, Various Locations

The Monadnock Conservancy is pleased to announce the Cheshire Walkers schedule for Spring 2024 - join us! Please see below for the schedule. This group is free and open to the public. We are finalizing one of the dates, so please check back in the coming weeks for more information. Also, although we love dogs, we can't allow them on these walks.

To sign up for a walk, [please click here and fill out the online form.](#)

There is always the option to carpool from the Keene area for each walk. If you would like to carpool to the trailhead meet at the Department of Public Works in Keene (350 Marlboro St.). The carpool will leave promptly at 9 am to drive to the trailhead. The group meets [here](#) in the parking lot. If you are coming from downtown, turn left on Bartholomew Court after Butterfly Park. Then take the first right into the first block of parking spaces.

For more information, contact Kate Sullivan at [kate@monadnockconservancy.org](mailto:kate@monadnockconservancy.org).

Learn More



ASSOCIATION of FISH & WILDLIFE AGENCIES



SQUAM LAKES  
NATURAL SCIENCE CENTER



SQUAM LAKES  
CONNECTED LEARNING ECOSYSTEM



**Project WILD Educator Workshop**  
April 17th, 9:30AM-3:30PM  
Graylag Nature Preserve, Pittsfield, NH

This workshop is for educators who want to introduce their students to hands-on activities that encourage problem-solving and field investigations about the environment they share with wildlife. Workshop participants will learn how to incorporate NH wildlife, nature, and environmental science into their curriculum.

Educators of students in grades K-12 are invited to attend. All educators welcome including teachers, afterschool leaders, scout leaders, homeschool parents, librarians, environmental science educators, non-formal educators, and anyone interested in bringing wildlife and nature activities to children. Registration is required.

All participants will receive the Project WILD curriculum book. The cost for this workshop is \$40. Directions on how to pay will be emailed to you after you register.

The Project WILD curriculum is owned by the Association of Fish and Wildlife Agencies.

Learn More



**Family Work Day & Pizza Party at Distant Hill Nature Trail**  
April 20 & 27th, 9:30AM

**Middle School Sustainability and Action Summit**

April 17th, 9:00AM-2:00PM  
Squam Lake Natural Science Center  
Holderness, NH

Calling all middle school teachers or parents: Bring a group of students to this summit to get the tools, resources, and inspiration to work on local sustainability efforts!

Learn More



**EarthFest 2024 Film Festival**  
April 20th, 11:00AM-3:00PM  
Monadnock Food Co-Op Meeting Room  
Keene, NH

66 March Hill Road, Alstead, NH

We are having two family friendly work/pizza parties at Distant Hill Nature Trail on Saturdays, April 20 and April 27 from 9:30 AM to 12:00 PM. Everyone can help, from toddler to adult, and every age in between!

Both events will start at 9:30AM followed by pizza and drinks at 11:30AM!

[Learn More](#)



**Monadnock Region Earth Day Festival**  
April 20th, 12:00-4:00PM  
Downtown Keene, NH

The annual Monadnock Region Earth Day Celebration celebrates some of the many things that make this region special: a commitment to ever-greater sustainability, healthy communities for all, and preserving and sustaining our planet, which is increasingly threatened by the impacts of climate change.

Join Monadnock Food Co-op and Monadnock Sustainability Hub to learn about what others are doing and making, buy delicious whole food, learn something new, enjoy performers and activities throughout the Co-op, Railroad Square, the bike path & amphitheater (behind the co-op) and maybe make a friend or two. Join others in our community to celebrate all the

Join Monadnock Food Co-op and MONIFF for a day of free film screenings in the co-op's meeting room! Screenings begin at 11 a.m. and will be repeated later in the afternoon. Light refreshments offered, and guests are welcome to bring their own!

**FEATURED DOCUMENTARY:** Farming While Black - two screening times, 11:00 AM and 1:40 PM

**SELECTED SHORTS:** Two shorts will shown before each screening of the featured documentary

[Learn More](#)



**Drive Electric Earth Month Earth Day EV Expo**

April 21st, 12:00-3:00PM  
Shaw's Supermarket Parking Lot  
10 Benning Street  
West Lebanon, NH

The Upper Valley's Earth Day EV Expo brings electric vehicle drivers together to answer all your questions about shifting to electric drive.

Which EV or e-bike is right for you? What financial incentives are available to reduce the price? Where and how do you charge it? How much money can you save by driving electric, and how much does it reduce greenhouse gas emissions?

The location is adjacent to a brand-new fast charging station being installed by the electric truck maker Rivian, and Rivian drivers will be bringing their trucks to share their experiences. Other EV vendors and drivers will be there too, as well as e-bike riders and more!

things we are doing well and renew our commitment to keep striving ever onward.

[Learn More](#)

[Learn More](#)



## Healthy Home Habitats

### How Do I Create an Eco-Landscape?

May 9th, 6:00PM

Healthy Home Habitats

25 Beech Street, Keene, NH

What does it entail? What does it look like? How do I change my conventional landscape over time to benefit pollinators and wildlife? Join Michele Chalice at Healthy Home Habitats for a free workshop on how to make your home more eco-friendly!

[Learn More](#)



### NHDAMF Crop Loss Program Now Open to NH Farmers

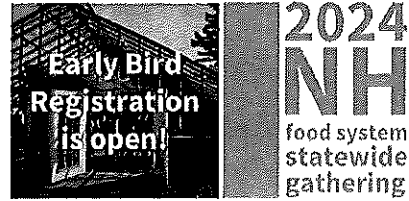
Apply by May 15th!

The New Hampshire Department of Agriculture, Markets, and Food (NHDAMF) Crop Loss Program will provide up to \$8 Million in relief in response to weather-related damages of 2023.

The program, developed in collaboration with staff from UNH Cooperative Extension, is designed to help New Hampshire Farmers who suffered significant crop losses as a result of extreme weather conditions which negatively impacted farms during 2023. Apply by May 15, 2024.

This program does unfortunately include income eligibility requirements that would exclude certain low-income, beginning, and/or small farmers. NHDAMF is recommending that farmers who experienced a crop loss of 30% or more in 2023, but whose gross receipts were under \$30,000 in 2022, still apply. They might make awards to smaller operations if funds remain in the program. BOX 19 of the application provides an opportunity to share reasons to consider, extenuating circumstances, etc. of why you should be considered to receive an award.

[Learn More](#)



**Annual NHDES Source Water Protection  
Conference**  
May 16th  
Army National Guard Edward Cross Training  
Complex  
Pembroke, NH

This year's conference will feature discussions  
and presentations including:

- Research on product substitutions to reduce PFAS
- State legislative and Drinking Water Program Funding Priorities
- UNH research on the distribution and fate of PFAS in surface water
- Municipal planning to manage growth and water resources
- Examples of using GIS to prioritize land conservation of critical water supply lands
- Nutrient reduction in a major lake used as a drinking water source
- Innovative monitoring and response to cyanobacteria blooms

The conference fee is **\$50.00 (includes light breakfast and lunch). Register early as attendance is limited.**

[Learn More](#)

**NH Food System Statewide Gathering**  
May 17th  
The Barn on Pemi  
Plymouth, NH

The NH Food System Statewide Gathering is a day full of networking, learning, professional development (and, of course, delicious food!) shared amongst the most influential and innovative food system professionals in New Hampshire.

We will spend our time together in six dynamic breakout sessions, learning and connecting on a variety of food system topics, as well as strengthening our connections through networking activities, a locally-sourced lunch, and end-of-gathering celebration. The full schedule of the day is now available!

[Learn More](#)



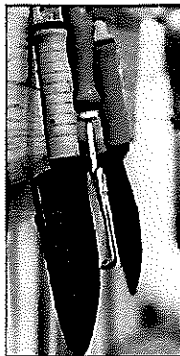


**2024 Radically Rural Summit Registration Now Open!**  
September 25th & 26th, Keene, NH

**Radically Rural** builds sustainability and success for rural life and places by building a network that connects people to each other and to new ideas. The annual Radically Rural Summit is divided into five different program tracks that feature topics offering strategic opportunities for transformation in rural communities.

CCCD is excited to once again organize the Land & Community Track at the 2024 Radically Rural Summit, being offered as a live event in Keene (ticket costs vary).

**Learn More**



**Gardening Resources:  
Ask UNH Extension!**

Ask Questions, Explore Opportunities, Get Ideas. Monday through Friday from 9 a.m. to 2 p.m., Master Gardeners are ready and available to help with topics including gardening, lawns, pests, fruits and vegetables, food safety, and much more. For research-based information you can trust, Ask UNH Extension.

1-877-EXT-GROW (398-4769)

**Yard & Garden Website**  
[answers@unh.edu](mailto:answers@unh.edu)  
[@askUNHextension](https://www.facebook.com/askUNHextension)



**New Hampshire Envirothon: Seeking  
Volunteers!**

Competition May 21s at NHTI

Each year, volunteer advisors coach teams with assistance from local conservation districts, forestry associations and participating natural resource agencies and organizations. Students are tested on their knowledge in five topic areas: aquatics, forestry, soils, wildlife and current environmental issues. Through the program, students develop an understanding of effective teamwork, resource management and ecology. At the same time, they gain valuable exposure to a range of disciplines while exploring possible career paths. Winning teams from each participating state and province advance to the National Conservation Foundation Envirothon (NCFE) to compete for national recognition, scholarships and prizes.

**Learn More**

**Support Local: Look for the Monadnock Grown Label**

Monadnock Grown products are those grown within the 34 towns of the Monadnock Region. Products must be made from items grown in our region.

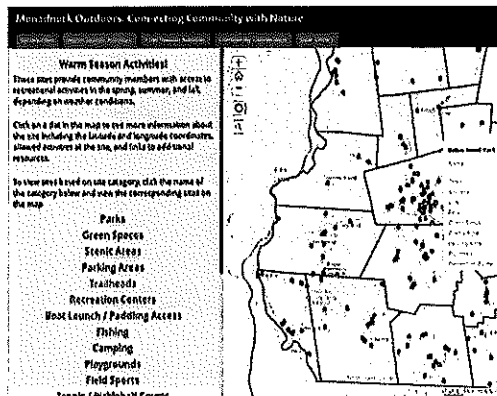
**See list** of participating farm stands and grocery outlets!



## Share your Conservation Events and News with Us!

Want to see your event or resource in the newsletter?  
Email Benée at [benee@cheshireconservation.org](mailto:benee@cheshireconservation.org) a brief write up of your news or event!

## Resources & Services



### Monadnock Outdoor Recreation Map

Winter wonders await! Where will the season take you?

The Monadnock Region resource map shows many of the fantastic recreational opportunities across our region, including parks, trail heads, boat ramps and more!

[View the Outdoor Resource Map Here!](#)

This initiative was made possible by Monadnock Outdoors, a regional partnership of community leaders working to promote active living and connections to nature. Monadnock Outdoors proudly advances active living in the Monadnock Region. This initiative is made possible by Cheshire Medical Center's Healthy Monadnock Alliance.



**Seed and Tool Lending Library at the Keene Public Library:  
A Free Gardening Resource for Cheshire County Community  
Members**

The Monadnock Grows Together Seed, and Garden Tool Lending Libraries are available to all residents of Cheshire County with an active **Keene Public Library Card** or **Cheshire County Special Borrowers Card** in good standing. Garden Tools can now be reserved up to 6 months in advance - **[Click here to place a reservation.](#)**

Please allow staff 24 hours to process pending reservation requests and retrieve reserved Items. All borrowers must also complete and sign our **Library of Things, Garden Tools and Outdoor Gear Library Terms of Use and Waiver of Liability.**

Vegetable and Flower seeds are available on the seed racks located in the Putnam Atrium. Garden Tools can be reserved by calling the main desk at (603) 352-0157.

VISIT THE **FREE**  
**Garden Tool Lending Library**  
in the  
**Kingsbury Makerspace**

**Makerspace hours and Tool Catalog can be viewed on the library's website.** **Call ahead or stop in to reserve tools!**

**Pick-up/Drop-off in the Makerspace**

**Borrow tools for 1 week intervals**

**www.keenepubliclibrary.org**

**Learn More Here!**

This program is a result of a partnership between the Keene Public Library, Cheshire County Conservation District, Antioch University New England's Community Garden Connections (CGC), and the National Center for Appropriate Technology (NCAT). Monadnock Grows Together is funded by the Urban Agriculture Conservation Grant Initiative. The National Association of Conservation Districts (NACD) and USDA Natural Resources Conservation Service (NRCS) established the Urban Agriculture Conservation Grant Initiative in 2016 to help conservation districts and their partners provide much-needed technical assistance for agricultural conservation in developed or predominantly developing areas. Since July 2016, NACD and NRCS have awarded three rounds of grants totaling \$4 million to 81 conservation district projects across 34 states.

In addition to seeds and garden tools, the library provides educational workshops and other resources about growing and saving seeds and organic gardening.

---

**Rental Season is Here!**

The Monadnock Grows Together Seed, and Garden Tool Lending Libraries are available to all residents of Cheshire County with an active Keene Public Library Card or Cheshire County Special Borrowers Card in good standing. Garden Tools can now be reserved up to 6 months in advance - [Click here to place a reservation.](#)

Please allow staff 24 hours to process pending reservation requests and retrieve reserved Items. All borrowers must also complete and sign our Library of Things, Garden Tools and Outdoor Gear Library Terms of Use and Waiver of Liability.

Vegetable and Flower seeds are available on the seed racks located in the Putnam Atrium. Garden Tools can be reserved by calling the main desk at (603) 352-0157.

VISIT THE **FREE**  
**Garden Tool Lending Library**  
in the  
*Kingsbury Makerspace*

**Makerspace hours and Tool Catalog can be viewed on the library's website.**

Call ahead or stop in to reserve tools!

Pick-up/Drop-off in the Makerspace

Borrow tools for 1 week intervals

[www.keenepubliclibrary.org](http://www.keenepubliclibrary.org)

**Learn More Here!**

This program is a result of a partnership between the Keene Public Library, Cheshire County Conservation District, Antioch University New England's Community Garden Connections (CGC), and the National Center for Appropriate Technology (NCAT). Monadnock Grows Together is funded by the Urban Agriculture Conservation Grant Initiative. The National Association of Conservation Districts (NACD) and USDA Natural Resources Conservation Service (NRCS) established the Urban Agriculture Conservation Grant Initiative in 2016 to help conservation districts and their partners provide much-needed technical assistance for agricultural conservation in developed or predominantly developing areas. Since July 2016, NACD and NRCS have awarded three rounds of grants totaling \$4 million to 81 conservation district projects across 34 states.

In addition to seeds and garden tools, the library provides educational workshops and other resources about growing and saving seeds and organic gardening.

---

**Rental Season is Here!**



**The Monadnock Gear Library** gives all Cheshire County residents the ability to borrow outdoor recreation gear at no-cost!

Gear includes camping supplies, fishing equipment, watercrafts, nature exploration tools and more.

The gear library is located at and run by the Keene Public Library. View the full collection of items below

[Learn More Here!](#)

This initiative was made possible by **Monadnock Outdoors**, a regional partnership of community leaders working to promote active living and connections to nature. Monadnock Outdoors proudly advances active living in the Monadnock Region. This initiative is made possible by Cheshire Medical Center's **Healthy Monadnock Alliance**.

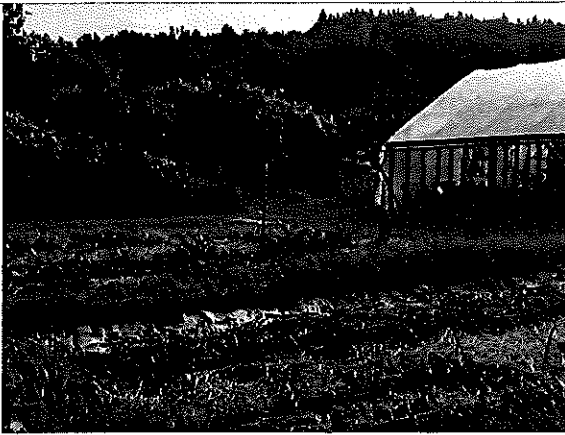
---

## Help Us Update Our Local Farm Map!

Now more than ever, folks straying away from grocery stores and looking to local farms for fresh food, milk, eggs, bread, etc.

Help us ensure that folks know about your farm's offerings, hours, location, & more as we update our **Find A Local Farm Map!**





## How to Update your farm's info:

- Step 1: Visit the [CCCD website](#)
- Step 2: Use the map to locate your farm
- Step 3: Review your farm's listed information
- Step 4: Email us with any necessary updates

Email to: [info@cheshireconservation.org](mailto:info@cheshireconservation.org)  
Subject line: "Farm Map: "Your Farm Name"

Connect with us!



Cheshire County Conservation District | 11 Industrial Park Drive, Walpole, NH 03608

[Unsubscribe marlowtownoffice@marlownh.gov](mailto:marlowtownoffice@marlownh.gov)

[Update Profile](#) | [Constant Contact Data Notice](#)

Sent by [bennee@cheshireconservation.org](mailto:bennee@cheshireconservation.org) powered by

